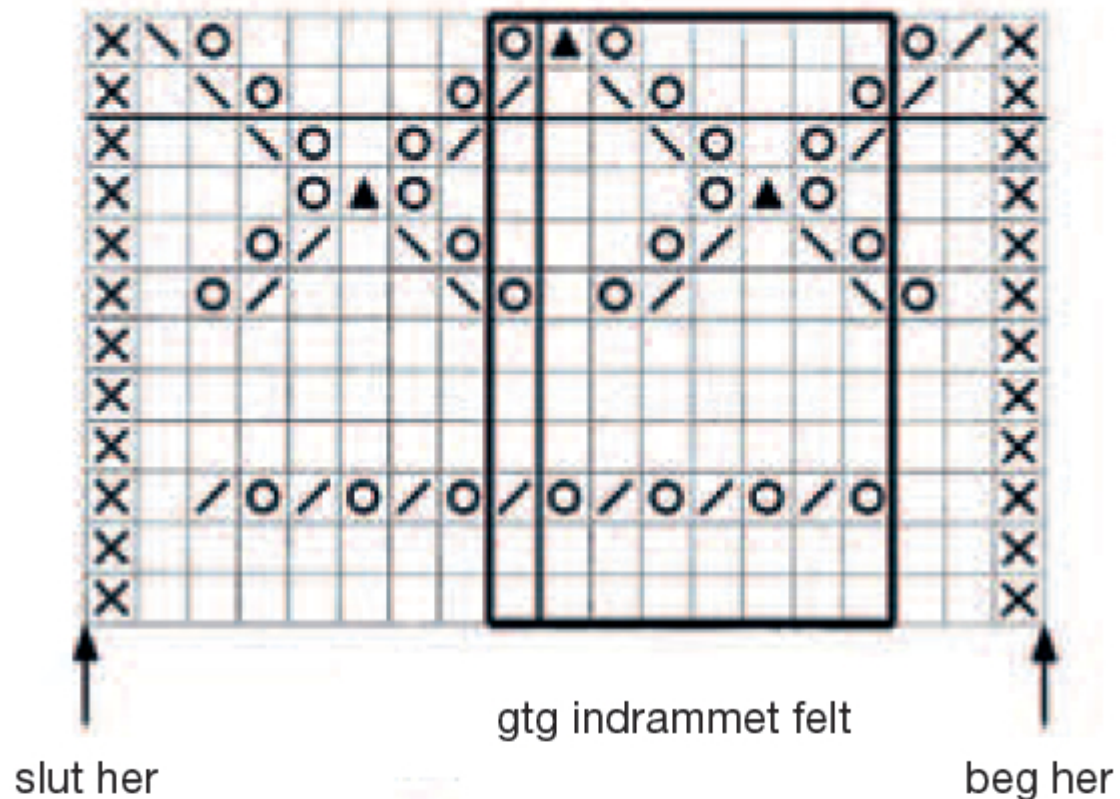






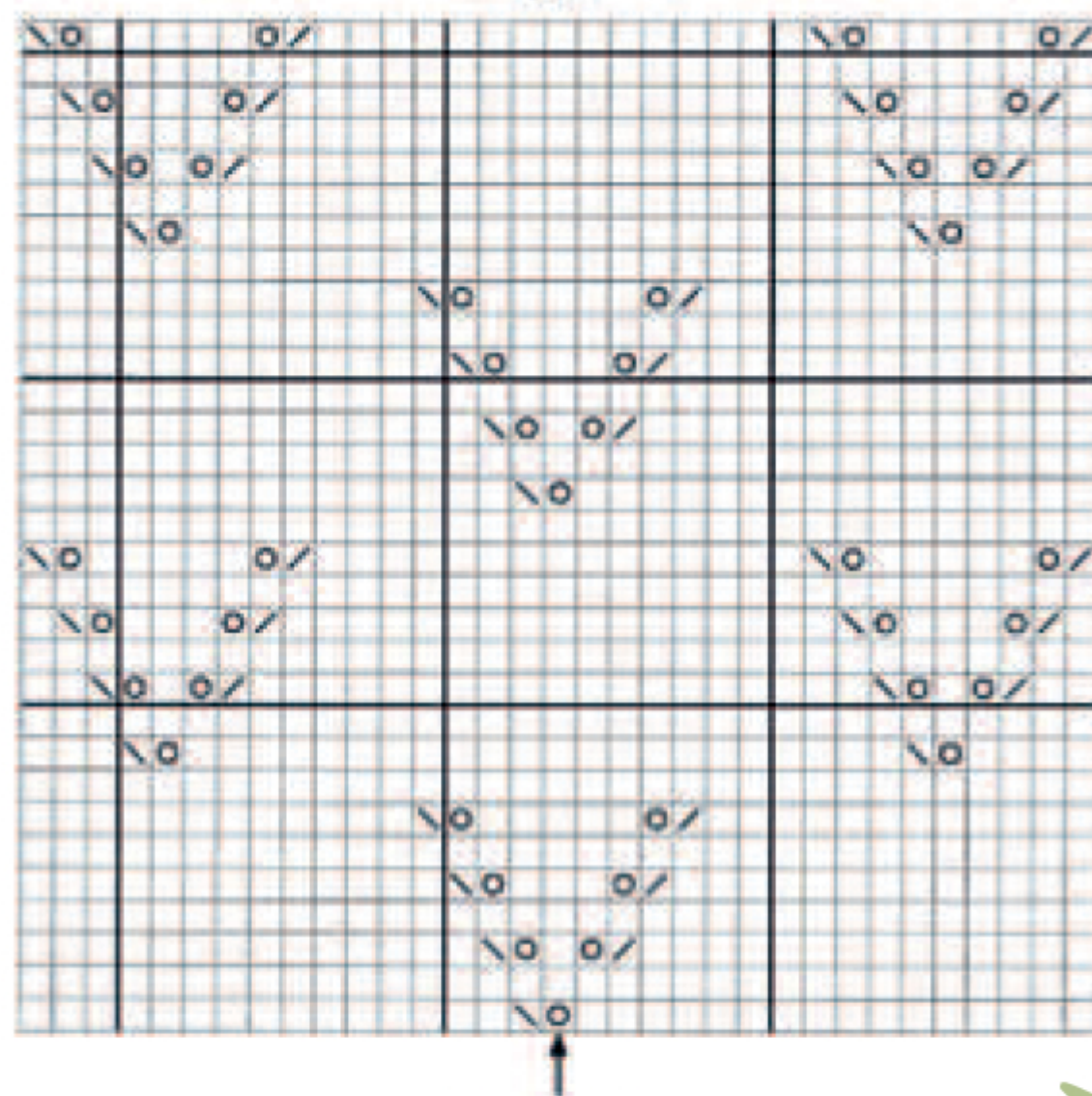


Dia A







-  = Glat
-  = Slå om
-  = R-siden: 2 r sm/vr-siden: 2 vr sm
-  = R-siden: 1 r løst af, 1 r, træk løs m over/vr-siden: 2 dr vr sm
-  = R-siden: 1 r løst af, 2 r sm, træk løs m over/vr-siden: 1 vr løst af med garnet foran arb, 2 dr vr sm, træk løs m over (indt skal fra r-siden vende mod højre)
-  = Kantm (r på alle p)

Dia B



midt forstk

33 m

-  = Glat
-  = Slå om
-  = 2 r sm
-  = 1 r løst af, 1 r, træk løs m over