




Diagram


□ = ret fra retsiden, vrang fra vrangen

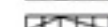
 = søt 3 m på hj.p bag arb, 3 r, 3 r fra hj.p


 = søt 3 m på hj.p foran arb, 3 r, 3 r fra hj.p


 = søt 3 m på hj.p bag arb, 3 r, 2 r sammen og 1 r fra hj.p


 = søt 3 m på hj.p foran arb, 2 r sammen, 1 r, 3 r fra hj.p

 = søt 3 m på hj.p bag arb, 2 r, 2 r sammen og 1 r fra hj.p

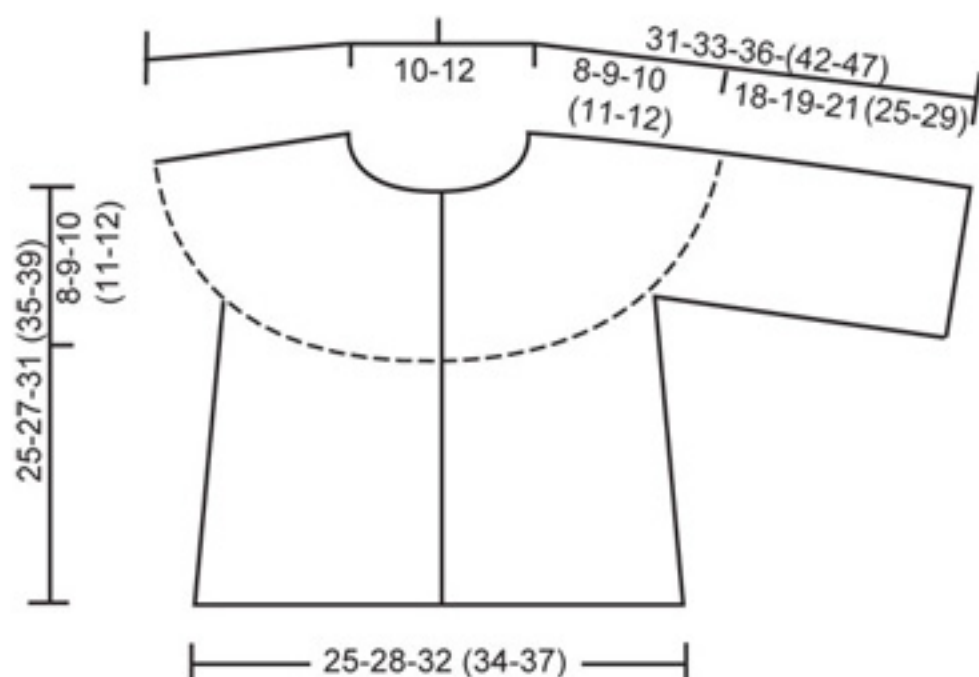
 = søt 2 m på hj.p foran arb, 2 r sammen, 1 r, 2 r fra hj.p

 = søt 2 m på hj.p bag arb, 2 r, 2 r fra hj.p

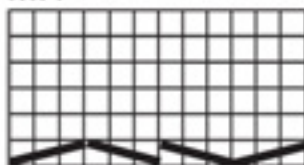
 = søt 2 m på hj.p foran arb, 2 r, 2 r fra hj.p

 = tag 1 m løst af p, 1 r, løft den løse m over

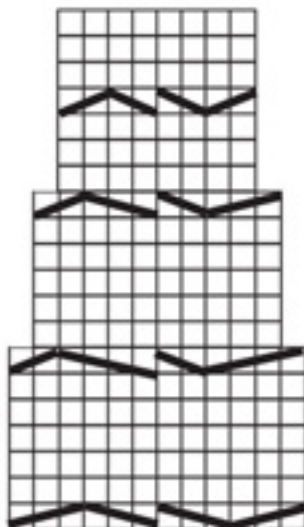
 = 2 m r sammen



M.1



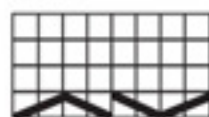
M.2



M.4



M.3



M.5

